

Thanks to donors for artifacts for museum's collection

The Museum at the Portage may be closed for the winter but docent Sarah Mautz is still busy entering data about the many items donated in 2016. Each item is measured, meticulously described in detail, and assigned a unique number; donor's name, address, and phone number are also



Often donors are from Portage, but sometimes they have no ties to Portage but find something they believe the Museum would like. That was the case with Pat Lien, Westfield, who found this soda bottle on her propperty. The A.J. Eastman bottling plant was at 508 W Wisconsin St in the late 1890s.

- | | |
|------------------------------|------------------------|
| Helen Hunter, Pardeeville | photo, 78 rpm record |
| Douglas Herrick, Pardeeville | railroad station print |
| Jane Considine, Portage | 2003 PHS yearbook |
| Anonymous | Collipp family items |
| Anonymous | Co. F items, Ansel |
| | Clark items |
| Anonymous | Photos |
| Bernice Denzer, Baraboo | Ice Skates |
| Mary Lou Armson Bacon, | |
| Branson, MO | 1939 PHS yearbook- |
| Millie Stanley (deceased) | Various ledgers from |
| | UW College of Ag |
| Peggy Amend, Pardeeville | CD player, 1890 Co |
| | lumbia Co. print info |
| Frances Biesek, Sauk City | Story's College books |



recorded. The artifacts range from pencils with the imprint of various Portage businesses to a man's Alpaca overcoat in mint condition. Below is a partial list of 2016 donors and brief description of the item (s) donated. Additional donors will be acknowledged in a future newsletter.



Barbara Kaiser donated several pairs of women's shoes, including this pair from the 1920's.

- | | |
|---------------------------------|---------------------------------------|
| Jeanne Mundt, Portage | 15 city directories |
| Galen Weddle | Books |
| Jane Baeten, Green Bay | PHS yearbooks, photos |
| Laurie Deakins, Portage | Book, PHS yearbook |
| Mary O'Donnell, Marquette, MI | Portage scrapbooks |
| Mike Casey, Nicasio, CA | Henry Bothin biography |
| Pat Teske, Maple Grove, MN | Advertising items; paisley wool shawl |
| | Baby clothing |
| Elaine Sweney (deceased) | Worden family history |
| Worden family, Evergreen Pk, IL | Beaded plant hanger |
| Kathryn Curtis, Portage | Women's shoes |
| Barbara Kaiser, Portage | A.J. Eastman soda pop bottle |
| Patty Lien, Westfield | 40's coat from Eulbergs |
| | Promotional items |
| Phil Mattke, Portage | |
| Kay Miller | |

Portage was well-represented at the Wisconsin Historical Society's annual Historic Preservation Conference in Wisconsin Dells in October. From left, John Waldman, Jane Considine, Peg Amend, Judy Eulberg, Lila Waldman and Kathryn Curtis attended workshops on a variety of topics aimed at providing local historical groups with ideas for recruiting members, hosting events, caring for their collections, and creating a sustainable plan for growth.

January 2017



Portage Historical Society Museum at the Portage

804 MacFarlane Rd., Portage, WI

Portage transplant tends Zona's roses

Ann Marie Fuerst took on the care of the roses in the Zona Gale garden in 2014. Although she grew up in a Chicago suburb, her mother was born and raised in Portage where her grandfather worked as a conductor on the Milwaukee Road. Ann Marie's mother graduated from Portage High School in 1933 and moved to Chicago to find work; she married, stayed, and raised three children there. The family spent every summer in Portage and Pardeeville where an uncle had a cottage on Park Lake.

Ann Marie went to college in Vermont where she majored in German and studied for two years in Vienna, Austria. She has two sons and three grandchildren. While her sons were growing up, the family spent time in Portage, at times staying at the B&B located next to the museum. Currently, one son is stationed in Virginia in the army and the other lives in Las Vegas. Ann Marie moved to Portage two years ago from Falls Church, Virginia, where she lived for 33 years. Her interest in roses was inspired by a boss who raised 40 rose bushes in trenches dug in clay soil. In 2003 she started ten rose bushes which were 4 feet tall and 4 feet wide with lots of blooms by the time she sold that home to move to Wisconsin two years ago.

After her initial introduction to roses, Ann Marie was hooked. She reads extensively on roses and has visited many rose gardens to learn about their care. She is a member of the American Rose Society and recently visited the international rose test garden in Portland, Oregon, where she met the Royal Rosarians and the Rose Queen. She was selected to serve as a docent at the National Rose Garden in Washington, DC, in September 2016. She spoke at the Columbia County Master Gardeners "Let's Get Green and Growing" workshop on April 2, 2016. One room in her Portage home is decorated in a rose

theme, and she has an extensive collection of books on roses.

Although south central Wisconsin is located in Zone 5, Ann Marie stated that growing roses here is a challenge. As roses in the museum garden need replacement, she is experimenting with hardier varieties adapted for Zone 3 or 4.

In addition to her services to the museum garden, Ann Marie is active in a variety of volunteer activities, including Olbrich Gardens, Portage Pride, American Players Theater, and Ford's Theater in Washington, D.C. As a volunteer for PBS, she helps with the Spring Garden Expo, the Quilt Expo, the annual auction, and whenever they need mailings sent out. She is planning to attend the Columbia County Master Gardener course in the future.

Zona Gale would be proud to see how the roses have benefited from Ann Marie's care.

*Contributed by
Lila Waldman, Columbia Co. Master Gardener*



Twenty+ years of Portage history in a box

Four years ago the Portage Historical Society donated bound copies of the *Portage Daily Democrat* from 1886-1916 to the Wisconsin Historical Society to be saved to microfilm. PHS member Dick Lillie, who is also active in a genealogical group spearheaded the arrangements, and in December the WHS donated 60 rolls of microfilm to PHS, who donated the rolls to the Portage Library.

WHS already had copies of the *Portage Daily Register*, once the competitor of the *Daily Democrat*, but the bound copies provided in 2012 of the *Daily Democrat* helped fill a gap. Both papers began production within a few months of each other in 1886, and competed for business until 1919 when they merged as the *Portage Register-Democrat*. According to Dick, one of the papers was Republican-leaning and the other Democrat-leaning and their varied philosophies affected their approach to news stories, even in the way they covered local news events.

The bound copies of the *Daily Democrat* were stored in the basement of the old library (now the Museum at the Portage) and were left there when the new li-

brary on W. Edgewater St opened in 1993. But even bound copies of newspapers eventually deteriorate, and the cost of protecting the papers was beyond the reach of PHS. Thus, the transfer to WHS in Madison where the large books were painstakingly dismantled over three years and prepared for the processing to microfilm. Now, local researchers and genealogists can use the library's microfilm



Dick Lillie (left) and John Waldman display a box of 60 microfilm reels of newspapers from 1886-1919.

reader to search and print articles, and WHS has another source of information about life in Portage 100+ years ago.

PHS board approves plan to hire part-time manager

After several months of discussion the Portage Historical Society board of directors voted at its December meeting to post announcement for a part-time Museum Manager. For several year seasonal docents have been at the museum: greeting visitors, answering questions, giving tours, etc., but the board deemed it was time to hire a manager to plan activities, handle facility issues, and expand social media (Facebook, Trip Advisor), and update the organization's website regularly. All the above activities are considered priority in order to increase membership and enhance income.

The board approved an hourly wage of \$14/hr. for 750 hours/year. It is expected that the hours/week will vary depending on the season and special events at the Museum. If you know someone who is a self-starter, works well with others and is familiar with internet and social media, he/she may send an email to museumattheportage@gmail.com to request a complete job description for the Museum Manager position and standard job application. The board hopes to fill the position well ahead of the anticipated reopening of the museum in April.

Portage Historical Society 2017 Board of Directors

John Waldman, President
Kathy Rowley, Vice-President
Peg Amend, secretary
Dave Eulberg, treasurer

Betty Christenson
Jane Considine
Kathryn Curtis
Fred Galle
Elayne Hanson
Peg Malone
Ted Rebholz
Florence Schieber
Heather Smith

PO Box 727, Portage, WI 53901
804 MacFarlane Rd., Portage 608-742-6682
www.portagemuseum.org

Railroads, brewing, and more on 2017 calendar

Portage Historical Society board of directors adopted an ambitious plan to expand its schedule of events in 2017, starting with its participation in the Wine Walk sponsored by the Chamber of Commerce. The Wine Walk is a popular ticketed event in downtown Portage, and the Society will use a vacant W. Cook Street building to exhibit the photographic display of old homes in Portage, and sell the book about old homes in Portage, currently being readied for publication.

Other events on the schedule are a talk about the history of the railroad in Portage (presented by Judy Eulberg); participating as a dessert vendor at the Wisconsin Chamber Orchestra concert at Pauquette Park on July 1, and an August 4 program about beer and prohibition by Dave Eulberg. Details for all the programs will be announced after final arrangements are confirmed. Check for updates at portagemuseum.org.

Museum featured stop on Fiber Arts Trail

The Museum at the Portage will be a featured venue on the Threaded Streams Fiber Arts Trail



special grand opening event on March 23. Historic textiles, clothing, handwork, embellishments and period pieces from the Museum's collection will be on display for the public to view. Local

artist and entrepreneur Roberta Condon approached the Museum board several months ago to encourage participation. Other participating studios and fiber artists include Helen Daughters Studio, Baraboo; Free Spirit Designs, Baraboo; Prairie Flower Beads, Portage; Marie Knit and Fiber, Prairie du Sac, and several other individuals (including Suzanne Huber of Portage) and small businesses.

Need a cure for cabin fever?

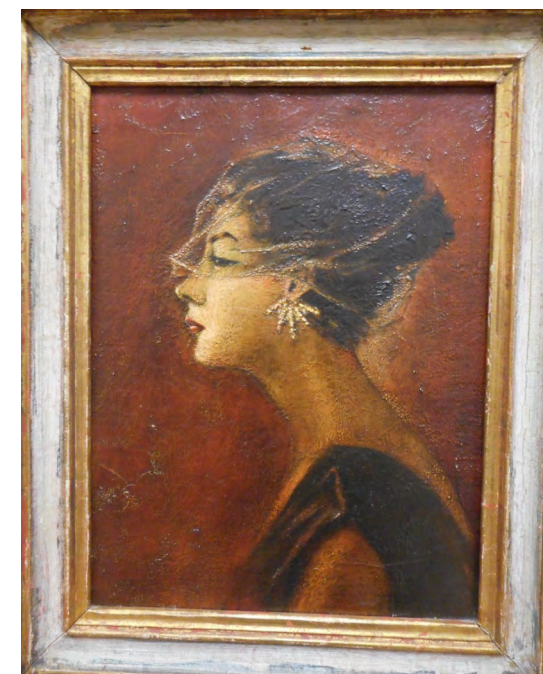
"Colby: The Comeback Kid," Feb. 1, 7:15 pm, speaker Jeanne Carpenter talks to Culinary History Enthusiasts of Wisconsin (CHEW) at their monthly meeting about Wisconsin's invention, Colby cheese. Goodman Community Center. See www.chewwisconsin.com for details.

"Laura Ingalls Wilder 100th Birthday Bash," Feb. 4 at Old World Wisconsin, Eagle. Ticket includes music, performance, craft supplies, food and beverage. See oldworldwisconsin.wisconsinhistory.org for details

Caring for Keepsakes, Feb. 21 webinar sponsored by Wisconsin State Genealogical Society, 7-8 pm. See www.wsgs.org for details.

Free Tours of Wisconsin Capitol, daily 45-minute tours. See tours.wisconsin.gov for details

The Art of Persuasion: Mobilizing the Masses in World War I, at Wisconsin's Veterans Museum on Capitol Square in Madison. Exhibit closes March 4.



Do you recognize this woman? The new Library Director Jessica Bergin has been learning about the artwork owned by the Library, but oil painting has no identifying information. If you know the subject or the artist, please contact Ms. Bergin at the library.